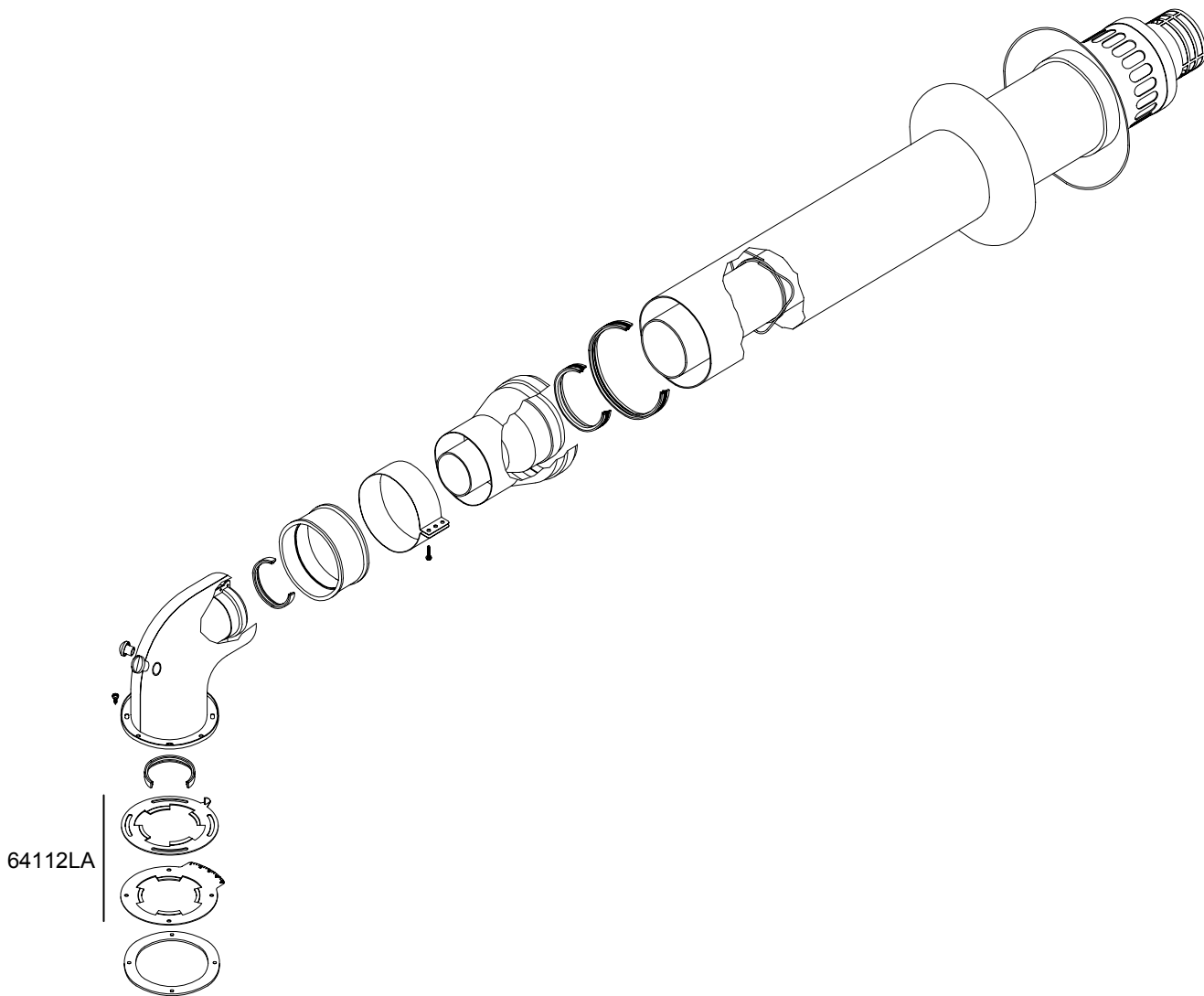


Rev.	Description:	Date



For room-sealed boilers. It allows flue exhaust and air intake through the 2 coaxial pipes, Ø125 external pipe (air intake) and Ø80 internal pipe (flue exhaust) to an external wall or a combined flue duct (chimney) conforming to UNI 7129/92 standard and D.P.R. 412/93

When deciding the *Flue Length* it has to be considered the total length of flue starting by the room-seal chamber top connection excluding the first bend.

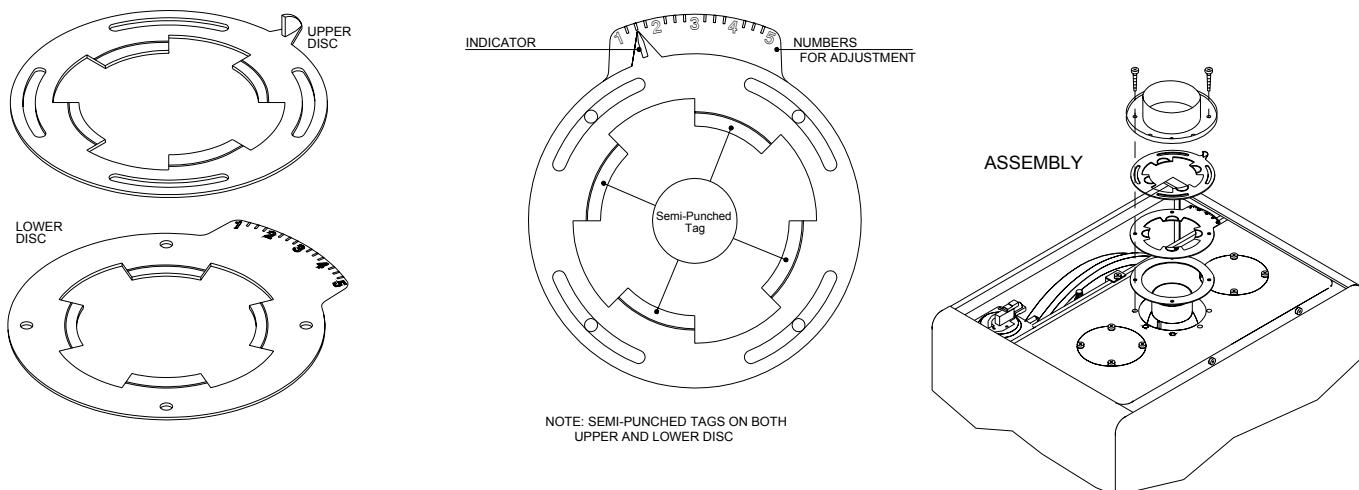
For additional bends please add the following value to the linear length value:

*flue bend Ø125/80 at 90° = 0.8 m.*

*flue bend Ø125/80 at 45° = 0.5 m.*

**Therefore to calculate the total length of flue it is necessary to add the linear length of flue pipes and the value of additional bends used in the installation.**

	64112LA	DIAPHRAGMS KIT			1
Pos.	Code	Description		u.m.	qt.
		Object <b>kit G</b>	Department: <b>Tecnico</b>	Data: 10.10.2003	Scale: ---
		description: HORIZONTAL-COAXIAL FLUE KIT SYSTEM With intake / exhaust pipes Ø125/80	Designed by: --	Code n.: <b>82081LP</b>	met.
			Controlled by: --	Sheet n.: <b>C0015_0B1</b>	L.P.G.
			Approved by: --		N. ---
<small>ALL DESCRIPTIONS AND ILLUSTRATIONS CONTAINED IN THIS LEAFLET HAVE BEEN CAREFULLY PREPARED BUT WE RESERVE THE RIGHT TO MAKE CHANGES AND IMPROVEMENTS IN OUR PRODUCTS WHICH MAY AFFECT THE ACCURACY OF THE INFORMATION CONTAINED IN THIS LEAFLET. E - OE ALL RIGHTS RESERVED. NO PART OF THIS DOCUMENT MAY BE REPRODUCED, SAVED IN STORAGE SYSTEMS OR TRANSMITTED IN ANY FORM OR BY ANY MEANS, WHETHER ELECTRONIC, MECHANICAL, PHOTOCOPIING, RECORDING OR OTHERS, WITHOUT THE MANUFACTURER'S PRIOR AUTHORISATION IN WRITING.</small>					



<p><b>MAXIMUM FLUE LENGTH</b> (linear length)</p>	<p><b>models</b>  <b>RS 30 E</b>  <b>RSF 30 E</b>  <b>RMAS 30 E</b>  <b>RBA CS 30</b>  <b>RBA CS 30/100</b></p>
<p>from <b>0.5</b> to <b>2 m.</b></p>	<p>1     2     3     4     5  ▲  Remove tags</p>
<p>from <b>2</b> to <b>3 m.</b></p>	<p>1     2     3     4     5  ▲  Remove tags</p>
<p><b>MAXIMUM FLUE LENGTH</b></p>	<p><b>3 m.</b></p>