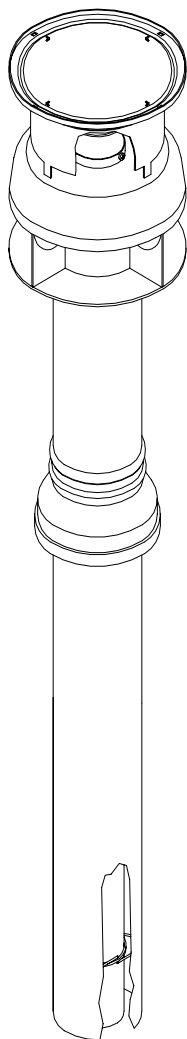


Rev.	Description	Date



For condensing boilers only. It allows flue exhaust and air intake through the 2 coaxial pipes, Ø100 external pipe (air intake) and Ø60 internal pipe (flue exhaust) to a roof.

When deciding the Flue Length it has to be considered the total length of flue starting by the room-seal chamber top connection excluding the first bend.

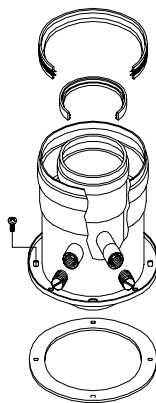
For additional bends please add the following value to the linear length value:

flue bend Ø100/60 at 90° = 0.8 m.

flue bend Ø100/60 at 45° = 0.5 m.

**Maximum flue length: 5 m.**

Therefore to calculate the total length of flue it is necessary to add the linear length of flue pipes and the value of additional bends used in the installation.



Pos.	Code	Description	U.M.	QT.y
		Object: <b>kit V</b>		
		Description: <b>Vertical-coaxial flue kit system with intake / exhaust pipes Ø60/100</b>		
		Date: 09.12.2002		
		Scale: --		
		Department: Tecnico		
		Designed by: --		
		Controlled by: --		
		Approved by: --		
		Code no.: <b>82091LA</b>		
		Sheet no: <b>C0016.0B1</b>		No. ---

ALL DESCRIPTIONS AND ILLUSTRATIONS CONTAINED IN THIS LEAFLET HAVE BEEN CAREFULLY PREPARED BUT WE RESERVE THE RIGHT TO MAKE CHANGES AND IMPROVEMENTS IN OUR PRODUCTS WHICH MAY AFFECT THE ACCURACY OF THE INFORMATION CONTAINED IN THIS LEAFLET. E + OE ALL RIGHTS RESERVED. NO PART OF THIS DOCUMENT MAY BE REPRODUCED, SAVED IN STORAGE SYSTEMS OR TRANSMITTED IN ANY FORM OR BY ANY MEANS, WHETHER ELECTRONIC, MECHANICAL, PHOTOCOPYING, RECORDING OR OTHERS, WITHOUT THE MANUFACTURER'S PRIOR AUTHORISATION IN WRITING.