

**fondital**

Uff. Pub. Fondital - CTC 03 P.271 - 02 Dicembre 2011 (12/2011)

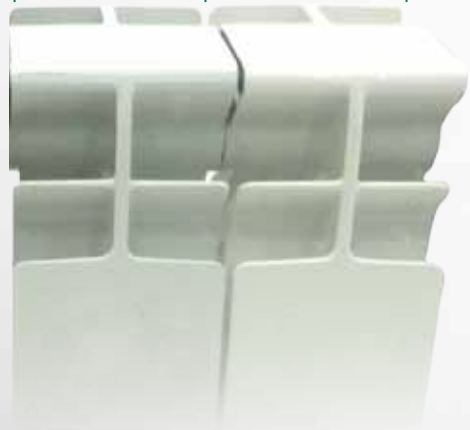
**PAINTING AND FINISHING PHASES**

**phase 4**

SECTION  
AFTER FIRST  
PAINTING STAGE  
MADE BY  
ANAPHORESIS

**phase 5**

SECTION  
AFTER SECOND  
PAINTING STAGE



MADE IN ITALY

The manufacturer reserves the right to make any modifications deemed necessary without prior notification.

MADE IN ITALY

**FONDITAL S.p.A.**  
25079 VOBARNO (Brescia) Italy - Via Cerreto, 40  
Tel. +39 0365 878.31 - Fax +39 0365 878.576  
e mail: [fondital@fondital.it](mailto:fondital@fondital.it) - [www.fondital.it](http://www.fondital.it)

COMPANY WITH QUALITY MANAGEMENT  
SYSTEM CERTIFIED BY DNV  
= ISO 9001:2008 =

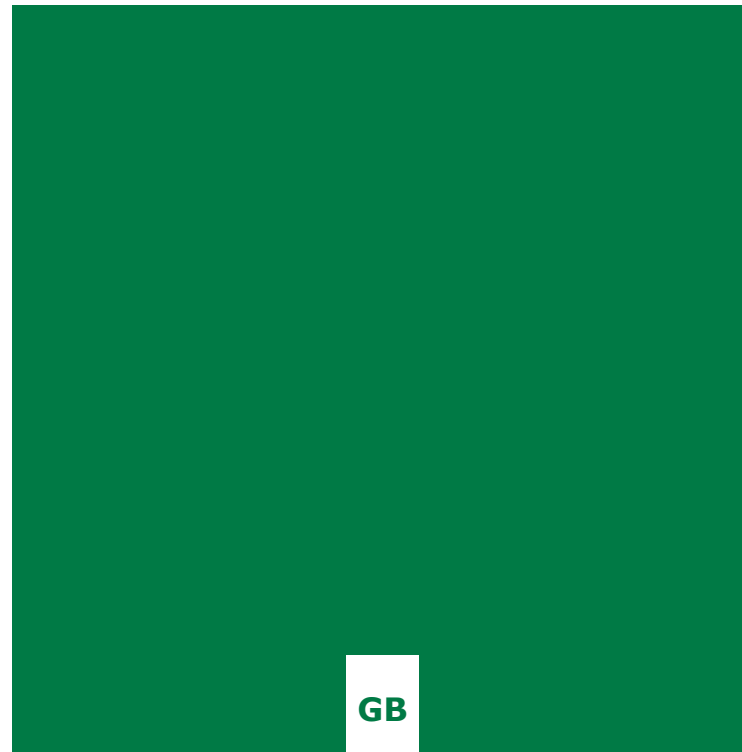
9PCGB03P271

**fondital**



**Blitz**  
Super

Die cast aluminium radiators for high pressure heating systems



**GB**

**phase 3**

**phase 1**  
UNMACHINED  
SECTION

**phase 2**  
MACHINED  
SECTION

WASHING AND  
CHEMICAL  
TREATMENT  
OF THE SURFACES



\* This picture shows the various phases of processing and painting of radiators.  
It may not represent the model described in the present document.

## EVOLUTION: BLITZ SUPER RANGE

**Super** is the new die-cast aluminium radiator by FONDITAL that features the following technological innovations:

- ▶ ornamental patent
- ▶ innovative geometry of the 6 rows of side fins that was developed specially to result in a high heat output with a smaller surface area and hence less weight
- ▶ presence of rear openings allowing enhanced heat exchange by convection
- ▶ a new cap for the element

## 2011 BRAND NEW CREATION

- ▶ *Super is **more powerful** than the models in the S4 range*
- ▶ *Super is **lighter** than the models in the S4 range, and hence easier to transport and install*
- ▶ *Super has an **optimal weight-to-heat output ratio***
- ▶ *Super features **numerous exclusive technological innovations by Fondital***
- ▶ *Super has an **innovative cap***
- ▶ *Super is a **top-of-the-range radiator!***



# Blitz Super

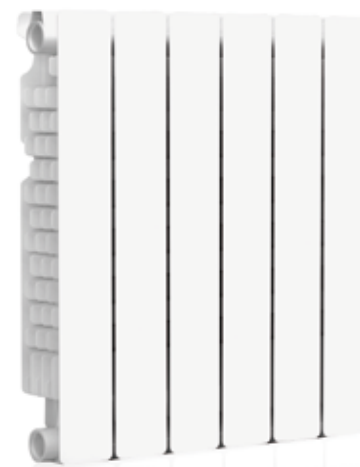
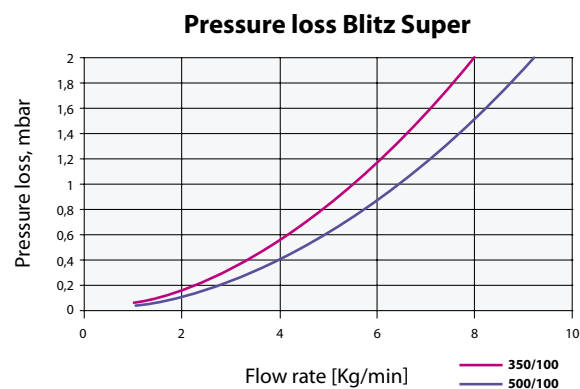
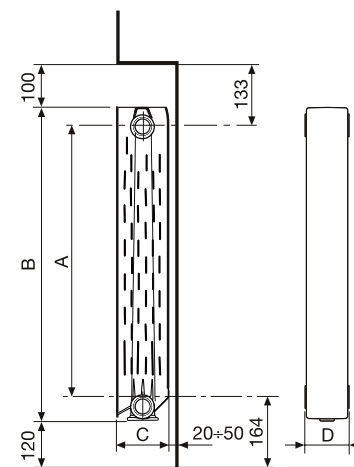
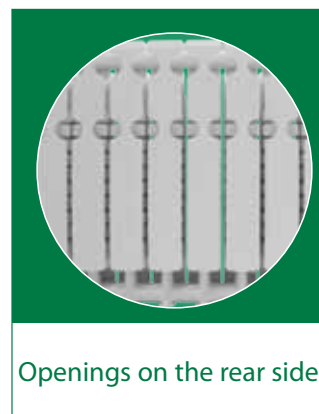


Model	Depth (C) mm	Height (B) mm	Centre distance (A) mm	Length (D) mm	Connection diameters inches	Water capacity litres/sect.	Weight Kg/sect.	Heat output $\Delta T$ 30K W/sect.	Heat output $\Delta T$ 50K W/sect.	Exponent n	Coefficient $K_m$
350/100*	97	407	350	80	G1	0.27	1.08	48.0	93.2	1.2994	0.5778
500/100	97	557	500	80	G1	0.30	1.40	63.5	124.3	1.3158	0.7225

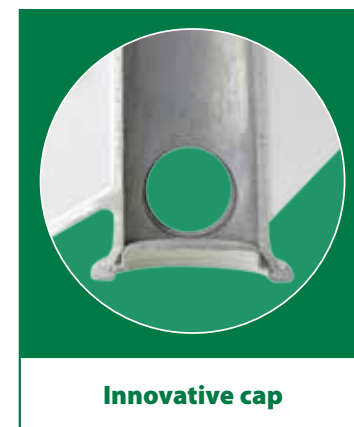
\*Provisional data, certification pending.

**Maximum working pressure: 1600 kPa (16 bar)**

Characteristic equation of the model  $\Phi = K_m \Delta T^n$  (reference EN 442-1). The thermal efficiency values, expressed at  $\Delta T$  50K, comply with EN 442-2.



# Blitz Super



- ▶ The new cap is not welded and hydraulic seal is provided by an **O-ring seal**.
- ▶ The new cap is made of **aluminized steel**.
- ▶ **No welds, so no problems with burrs** at the bottom of the radiator.
- ▶ **All the caps** for the models in the **Blitz Super** range undergo **Aleternum® anticorrosion treatment**.



Fondital guarantees **Blitz Super** for **10 years** from the date of installation against all production defects providing the heating system is conform to the regulations, in compliance with the standards in force and provided the instructions on installation, use and correct maintenance supplied with the product have been observed.