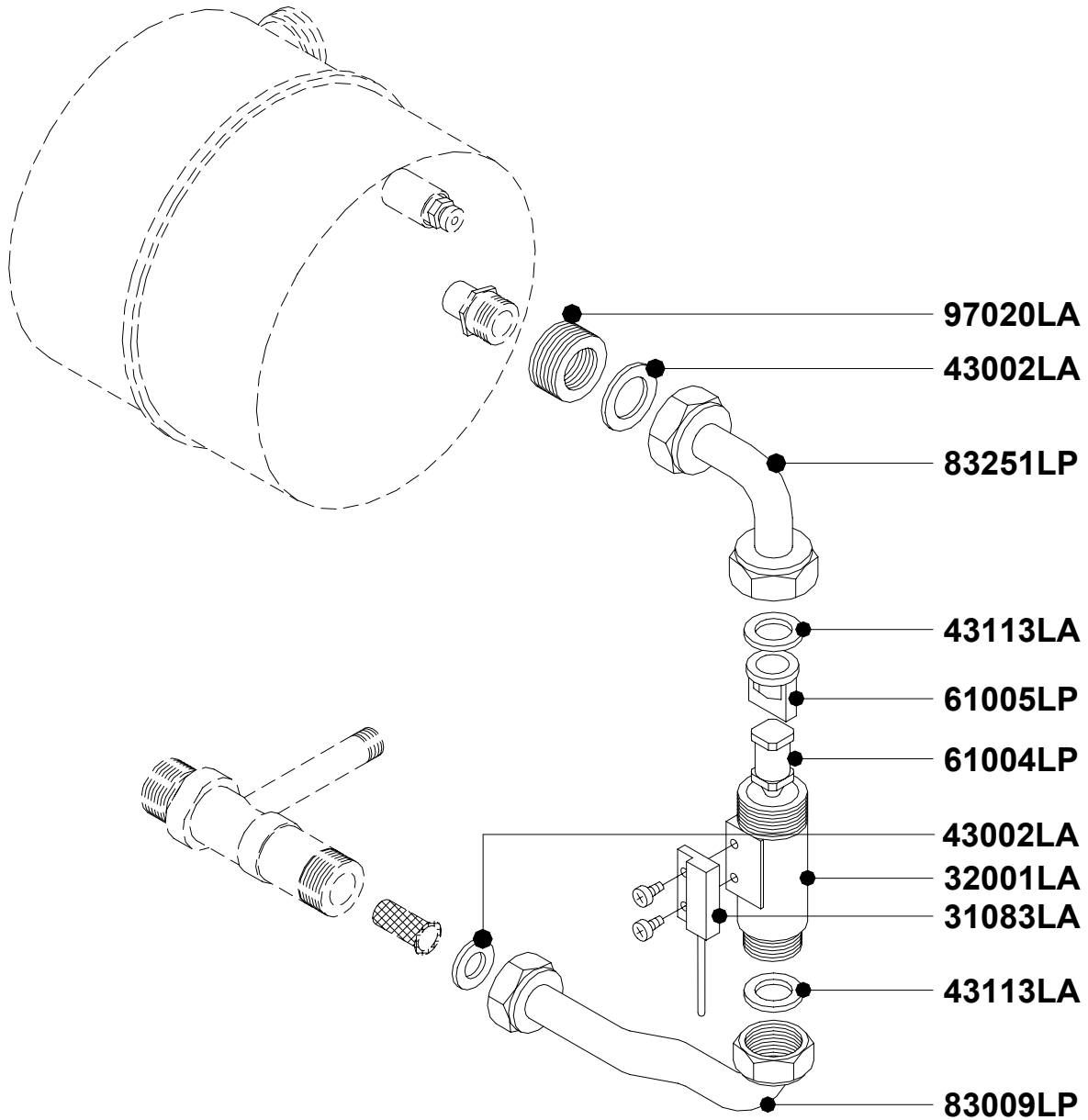


Rev.	Description	Date
01	AD ADDITION OF 1/2" WASHER	29-09-04



code **96008LP**

	31083LA	FLOWSWITCH MICRO LEAD ID9401/L	no.	1
	32001LA	FLOWSWITCH BODY 02052	no.	1
	43002LA	WASHER D.18.5x10.2x2 1/2" -AFM 34	no.	2
	43113LA	FLOWSWITCH WASHER D.22x10.5x3 EPDM	no.	2
	61004LP	FLOWSWITCH PISTON	no.	1
	61005LA	PISTON STOP	no.	1
	83009LP	COLD WATER INLET D.12 PIPE CE	no.	1
	83251LP	EXCHANGER-FLOWSWITCH 1/2" D.12 PIPE	no.	1
	96007LP	ELECTRONIC FLOWSWITCH 1/2"	no.	1
	97020LA	BRASS RING NUT 3/8"-1/2" INT./ EXT.	no.	1

Pos.	Code	Description	U.M.	QT.y
		Object:	Date: 29.09.04	96008LP
		KIT FOR FLOWSWITCH REPLACEMENT	Scale: ---	Code no.: ---
			Department: Tecnico	---
		Description:	Designed by: --	---
		KIT FOR FLOWSWITCH REPLACEMENT - D.H.W EXCHANGER 3/8"-1/2" CONNECTIONS	Controlled by: --	Scheef no: F0031_AB2
			Approved by: --	No. ---



ALL DESCRIPTIONS AND ILLUSTRATIONS CONTAINED IN THIS LEAFLET HAVE BEEN CAREFULLY PREPARED BUT WE RESERVE THE RIGHT TO MAKE CHANGES AND IMPROVEMENTS IN OUR PRODUCTS WHICH MAY AFFECT THE ACCURACY OF THE INFORMATION CONTAINED IN THIS LEAFLET. E - OE ALL RIGHTS RESERVED. NO PART OF THIS DOCUMENT MAY BE REPRODUCED, SAVED IN STORAGE SYSTEMS OR TRANSMITTED IN ANY FORM OR BY ANY MEANS, WHETHER ELECTRONIC, MECHANICAL, PHOTOCOPIING, RECORDING OR OTHERS, WITHOUT THE MANUFACTURER'S PRIOR AUTHORISATION IN WRITING.